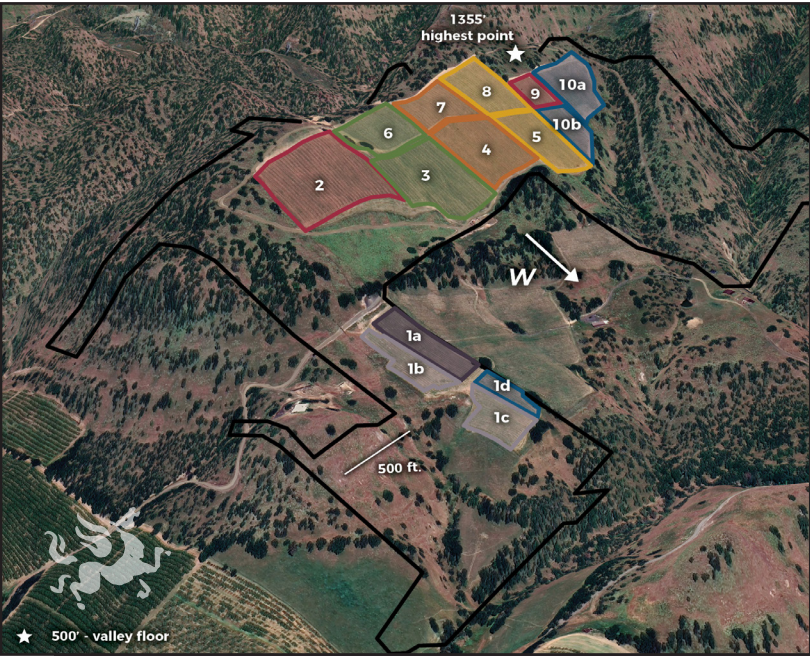


2024-2025 GRAPE VARIETIES & PRICES



Vineyard Blocks Map

Block	Variety	Year	Acres
1a	Syrah	2019	1.5
1b	Chenin Blanc	2024	1.2
1c	Chenin Blanc	2024	1
1d	Primitivo	2019	0.5
2	Grenache	2022	5
3	Sangiovese	2022	4.5
4	Cabernet Franc	2024	3.3
5	Nero d'Avola	2024	2.8
6	Sangiovese	2021	2.1
7	Cabernet Franc	2021	2
8	Nero d'Avola	2021	2.5
9	Grenache	2021	1
10a	Primitivo	2022	3.1
10b	Primitivo	2024	1.4

VARIETY	YEAR PLANTED	CLONE(S)/ROOTSTOCK	ACRES	VINE SPACING & TRAINING	EXPECTED TONNAGE IN 2024	2024 PRICE PER TON	TONS EST AVAILABLE AS OF 1.20.24
SYRAH (Block 1a)	2019	Joseph Phelps Clone/ Own Rooted; 5% Viogner interplanted	1.5	5' X 10' VSP	6	\$3,400	Fully Contracted for 2024
CHENIN BLANC (Blocks 1b, 1c)	2024	Chenin blanc/SO4	2.2	5' X 10' VSP	First crop of 2-4 tons expected 2026 Under long-term contract		
PRIMITIVO (Block 1d)	2019	Clone 03/Own Rooted	0.5	5' X 10' VSP	2	\$3,700	Fully Contracted for 2024
GRENACHE (Block 2)	2022	Clone 10 (Alban Clone)/ Schwarzman	5	4' X 10' VSP	7.5-10	\$3,300*	7.5-10
SANGIOVESE (Block 3)	2022	Clone 12.1/Schwarzmann	4.5	4' X 10' VSP	7.5-10	\$3,300*	7.5-10
CABERNET FRANC (Block 4)	2024	Clone 214.1/Schwarzman Cert	3.3	4' X 10' VSP	First crop of 5+ tons expected 2026 Price TBA		
NERO D'AVOLA (Block 5)	2024	Clone 02.1 Cert/Schwarzman Cert	2.8	4' X 10' VSP	First crop of 4+ tons expected 2026 Price TBA		
SANGIOVESE (Block 6)	2021	Clone 12.1/Schwarzman	2.1	5' X 8' VSP	6	\$3,700	4
CABERNET FRANC (Block 7)	2021	Clone 11/Schwarzman	2	5' X 8' VSP	6	\$3,900	4
NERO D'AVOLA (Block 8)	2021	Clone 02.1 Cert/Schwarzman	2.5	5' X 8' VSP	10	\$4,000	TBD APPROX 2-4
GRENACHE (Block 9)	2021	Entav 362.1 Clone/ 101-14 Cert	1	4' X 8' GOBLET	3-4	\$3,700	Fully Contracted for 2024
PRIMITIVO (Block 10a)	2022	Clone 03.1/1103P.1 Cert	3.1	4' X 8' VSP	6-12 Tons	\$3,300*	6-12 Tons
PRIMITIVO (Block 10b)	2024	Clone 03.1/1103P.1 Cert	1.4	4' X 10'VSP	First crop of 2.5 Tons expected 2026 Price TBA		

*\$3,300/ton price is for first crop fruit in 2024 for blocks 2, 3, & 10a; price in 2025 and beyond projected to be \$3,700/ton or more

WINDHORSE VINEYARD

Elevation 800' - 1300' (valley floor <500')

Slope 15% - 35%

Aspect dominantly West

Avg. M.A.P. 18"

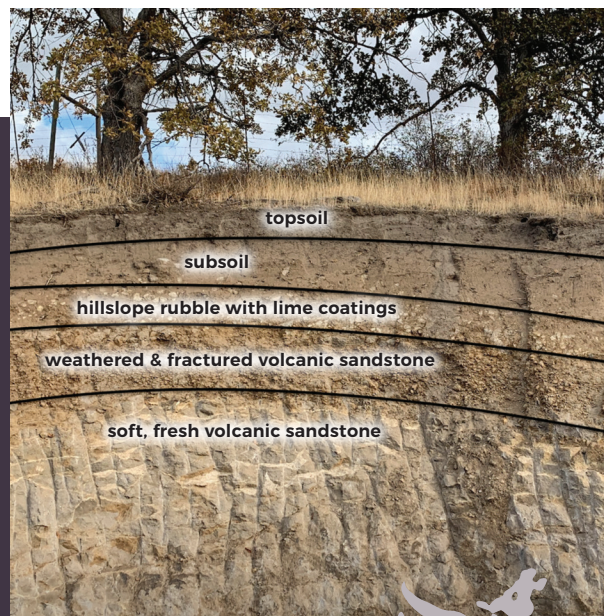
Avg. G.D.D. 2,950

Wind 5-25 mph Westerly

Soils Cherryhill Loam, cobbly sandy loam subsoils
(Ultic Haploxeralfs)

Soil Parent Material thin loess over hillslope colluvium derived
from andesitic volcanic sandstone

AVA Columbia Gorge



JOIN US FOR THE LONG TERM

As our long-time client wineries and many others in the Northwest wine industry know, we have been making an extraordinary push for about 5 years now to reimagine, replant, and expand Windhorse Vineyard with the goal to make it the premier wine grape vineyard in the Columbia Gorge region. As the 2024 crop year unfolds, we are on the brink of expanding our portfolio of varieties available, with tonnage of fruit available increasing approximately 5 fold over the next 4 years. Thus we are actively inviting new winery partners to grow with us.

In 2023 we had our first harvest from our 2021 plantings of Sangiovese, Cabernet Franc and Nero d'Avola (see map: blocks 6, 7, and 8). And now in 2024 blocks 2, 3, and 10a will bear their first crops of 5 acres of Grenache, 4.5 acres of Sangiovese and about 3 acres of Primitivo, respectively. Finally, in 2026, 2 acres of Chenin blanc in block 1 and blocks 4 and 5 consisting of 3.3 acres of Cabernet Franc and 2.8 acres more of Nero d'Avola, respectively, will bear first crops after the blocks are replanted in 2024, providing substantially increased tonnages of these grape varieties.

Our long-term goal is to provide exceptional fruit to exceptional wineries in the Columbia Gorge and Willamette Valley areas. Our vision is to build long-term relationships with wineries desiring 4- to 6-ton or greater quantities of grapes per variety, ideally through acreage contracts of entire variety blocks.

CERTIFICATION

Windhorse Vineyard is LIVE and Salmon Safe Certified. We are certified sustainable in the LIVE program (Low Input Viticulture & Enology: <https://livecertified.org/>). Every year, every aspect of our farming practices & the materials we use, such as fertilizers, fungicides & pesticides, are logged, documented, & 3rd-party independently verified to meet international sustainability standards.

In addition, we meet or exceed the standards to be certified Salmon Safe (<https://salmonsafe.org/>), meaning that our farming practices protect water quality & maintain watershed health for anadromous fishes such as salmon & steelhead.



MANAGEMENT

Windhorse Vineyard is being professionally managed by Results Partners (RP), Oregon's premier vineyard management company. RP is well known for elevating vineyards and fruit quality to superior levels. With acreage contracts, clients' preferred viticultural practices and grape harvest parameters can be tailored to the winery and winemakers' demands.